

YOUR NAME

Start the trail at the grey arrow
Follow the numbers from 1-14.

1 FONT

A font is where baptisms (christenings) take place.
Which two creatures can you see on the font?

What do you think the boat is?

N _____ A _____

Find another font in the Church.
Mark the plan with F.



2 PULPIT

The pulpit is used by the priest for sermons or talks.
How many steps does it have? _____
Why do you think it is so high? _____

There are three figures carved on the pulpit. Draw
arrows to show what each of them is holding.

- | | |
|---------------------|--------|
| St. Peter (Petrus) | Keys |
| St. John (Iohanus) | Book |
| St. James (Iacobus) | Scroll |

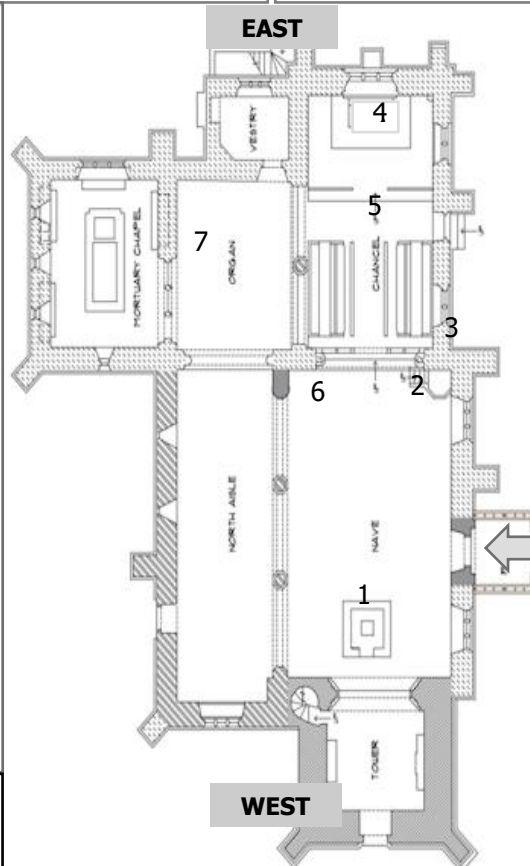
3 PULPIT WINDOWS

Our Church is lucky enough to
have several windows made by
Charles Eamer Kempe and his
studio.

The saints in this window are
(tick the boxes)

- | | |
|--------------------------------------|--------------------------------------|
| <input type="checkbox"/> St. Matthew | <input type="checkbox"/> St. Mark |
| <input type="checkbox"/> St. Hubert | <input type="checkbox"/> St. Luke |
| <input type="checkbox"/> St. John | <input type="checkbox"/> St. Francis |

What is the name of the knight
mentioned in the first window
on the right hand side in the
Chancel ?



4 ALTAR

The altar is a table ; it is where
the priest leads worship. Look
at the cloth covering the front
of the altar. The cloth is called
a frontal. What colour is it
today?

Behind the altar is a beautiful
carved screen called a reredos.
What is written on it ?

G _____

I H S

C _____

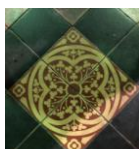
What do you think
the cross on the
altar is made of?



5 TILES

The floor tiles are encaustic tiles
made by Minton. Encaustic
means that it is made using
different colours of clay,
rather than a glaze.

How many different colours
can you see ?



6 EAGLE

Where is there an eagle in the Church?

Mark where it is on the
plan with an E.



7 ORGAN

How many pipes can you
count?

The organ has been moved
twice. In 1920 in memory of

And in memory of Jonathan
Wells in which year?

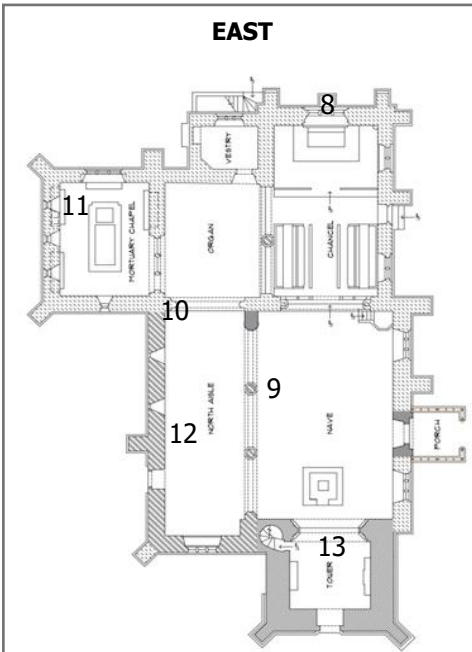
8 EAST WINDOW behind altar

This is another window made by Charles Eamer Kempe. Find the wheat sheaf which is his signature.



Now look back at the pulpit windows ; what can you see in the bottom left-hand corner of each of them ?

From what bird do you think the feathers of the angel wings might have come ?



9 PILLARS AND ARCHES

Walk in to the centre of the Church and look around. Are the pillars all the same shape ? ____

What shape are they?



10 ANGEL

Until it was brought inside to protect it from the weather, this angel used to stand on the grave of Bertha Mary Gray who died, aged 5, from diphtheria. This is a disease against which most people in England are now protected by vaccination.

What do you think the angel is holding ?



11 MORTUARY CHAPEL

A mortuary chapel is where people are buried. This chapel is for members of the Somers Cocks family, who built Eastnor castle and paid for most of the rebuilding of the church in Victorian times about 150 years ago. The large tomb in the centre of the chapel is for Charles Somers Cocks. In what year was he born?

When did he die? _____

How old was he when he died? _____

12 WAR MEMORIAL

This commemorates those who died in the First World War (or Great) War and the Second World War. What are the dates for the First World War? _____
Second World War? _____

How many men from the parish of Eastnor died in the First World War? _____

Second World War? _____

Talk about what you notice in the list of names.

13 TOWER

This is where the bell ringers ring the church bells. How many ropes can you see? _____

Why do you think they have a fluffy part? _____

On 30th March 2016 a peal of 5 ____ _ Plain Bob Minor was rung
How long did it take?



14 MY WINDOW

Who would you commemorate in a stained glass window ?

Draw the window you would make for them and explain why.

When you leave the Church you may like to see the bench that was designed by Lady Henry Somerset, the elder daughter of Charles Somers Cocks whose tomb you saw in the mortuary chapel.

